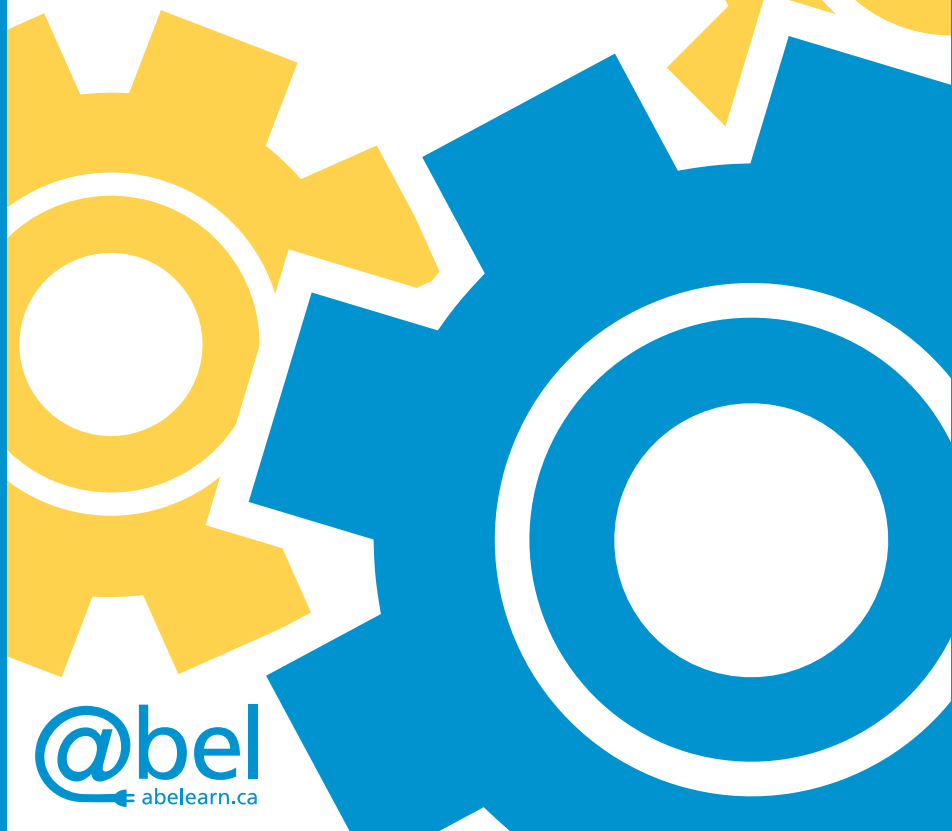


ABEL Tools & Services



ABEL Tools & Support

The ABEL program unites people, technology and content under one common goal: to transform practice by connecting people.

ABEL provides members with access to a variety of technology tools, continuously updated to reflect innovation and a progressive approach for learning. These include *wiki and blogging software, podcasting, SmartBoards, Second Life, ePortfolios, digital storytelling, videoconferencing* and more! Members can access tools on the ABEL website under the following categories:

- Collaboration
- Online streaming and digital media
- Gaming in education
- Web content management
- External resource links
- Pilot applications

Pilot Applications

ABEL Pilot Applications provide opportunities to learn about and apply leading-edge tools you can use for your own professional development or jointly with your students. Pilot Applications are supported in the same robust way as all ABEL Tools, with the following difference: member feedback is critical in supporting research into whether or not they become foundational ABEL Tools.

To sign up for an account for a Pilot Application, please make your request via ABEL Tools online, or by emailing abelinfo@yorku.ca. Visit the www.abelearn.ca to find out about the current ABEL Pilot Applications.

Access ABEL Tools & Support: www.abelearn.ca/ToolsandSupport.aspx

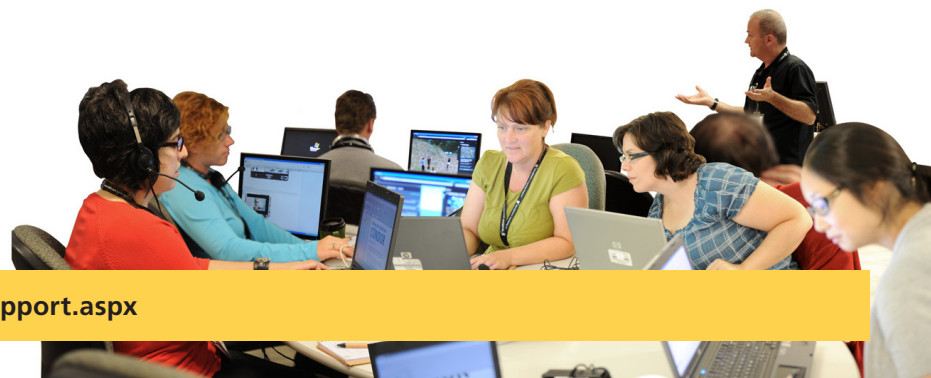
Consulting Services

The ABEL Program offers access to services to help build capacity for technology-enhanced learning, collaboration, knowledge sharing and mobilization.

Consulting Services include:

- Videoconferencing
- Video streaming (real time or asynchronous access)
- Consulting on the effective use of collaborative and social applications such as blogs, wikis, podcasting, learning management systems, and more
- Instructional design for the development and delivery of web-based learning and/or collaborative services
- Technological consulting
- Client training and professional learning consulting
- Web and content development
- Access to a network of partners that are both local, national and international

ABEL meets the needs of members, partners and collaborators by customizing service to meet specific member goals. Contact us at abelinfo@yorku.ca or call us at **416.736.2100 x 20020** to discuss your requirements.





York Research Tower, 3rd Floor
4700 Keele Street, Toronto, Ontario
Canada M3J 1P3